



LAKE SUPERIOR

BIG TOP CHAUTAUQUA

A NON-PROFIT PERFORMING ARTS ORGANIZATION SINCE 1986

A N N U A L R E P O R T



THE 2022 SEASON WAS UNDERWRITTEN BY THE BAYFIELD INN

ASHWABAY ALLIANCE BOARD OF DIRECTORS

Kim Ogle, President
Iron River, WI
Essentia Health

Chuck Finn, Vice President
Bayfield, WI
State University of New York (retired)

Mark Ehlers, Treasurer
Cornucopia, WI
Ehlers & Pierce CPAs (semi-retired)

Kellie Pederson, Secretary
Washburn, WI
UW-Madison Extension

Dave Anderson
Washburn, WI
Anderson Electric

Kyle Ellefson
Ashland, WI
Northern State Bank

John Gerzina
Bayfield, WI
DSGW Architects

Keith Kylmala
Duluth, MN
Kylmala Truss

Carol "Coke" Lindsey
Washburn, WI
Ashland Industries (retired)

Jim Miller
Washburn, WI
Nat'l Assoc. for College Admission Counseling

Dominic Papatola
St. Anthony, MN
Otto Bremer Trust

Jim Perry
Larsen, WI
UW Oshkosh-Fox Cities (retired)

Sara Richter
La Pointe, WI & Minneapolis, MN
Voyageur Outward Bound School

John Thiel
Bayfield, WI
Howl Adventure Center

Kate Ullman
Ashland, WI
Legislative Semester, Inc.

Bill Van Sant
Bayfield, WI
Manufacturing

Katrina "Kat" Werchouski
Bayfield, WI
MN Dept of Human Services,
Office for Equity and Inclusion

EMERITUS DIRECTORS

Ruth Goetz
Cable, WI
Fundraising Consultant

Kimberly Rymer
Bayfield, WI & Maui, HI
The Bayfield Inn

LAKE SUPERIOR BIG TOP CHAUTAUQUA

Now an operating arm of the newly formed Ashwabay Alliance, Inc.

Dear Friends of the Big Top,

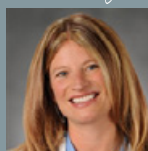
Your Big Top is thriving! Looking back at 2022, we see a year of participation, support, inspiration and growth. This year we continued to rebuild after the closure of 2020 and the limited capacity shows of 2021; 2022 brought us back to near-normal finances. In fact, we saw record ticket sales in 2022. We hosted amazing performances by Brandi Carlile, Tanya Tucker, Michael Franti, Five For Fighting, and The Temptations. We debuted 3 new works by the Blue Canvas Orchestra and reprised some of our favorites. All in all, it was a fantastic year of artistry and fellowship.

There were some big changes in 2022. The biggest change was the completion of the merger with Ashwabay Outdoor Education Foundation. In February, the two organizations joined and formed the Ashwabay Alliance Inc. Our boards merged into one board with two operating entities under that board, each operating arm being led by our two executive directors and our extraordinary staffs. Together we have strengthened the foundation of two critical community organizations and laid the groundwork to begin looking at campus-wide facility needs.

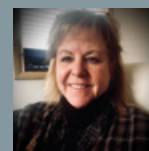
Another exciting change was the opening of The Backstage event center. On December 16, we officially welcomed our first audience to the new performance space for our "Home for the Holidays" performance by the Blue Canvas Orchestra. Our new little listening room, a delightfully funky mix of church pews and cocktail tables that seat about 85 people, is the new home of the Blue Canvas Orchestra all year round. To help us open the room in style, we were thankful to have Musical Director, Ed Willett leading the music, chef Kirk Bratrud in the kitchen, martini mixer David Sneed behind the bar and our friends Tammy Reykdal and Arfee Edwards waiting the tables, plus our dedicated volunteer cleaning team of Linda Schneider and Linda Nemeč, aka The Lindas, behind the scenes. It was the first of many special happenings in the new event center. We look forward to welcoming you to the new space; just look for the beautiful musical sculpture in front of the building from our friends Kim & Quito Rymer, with a special water feature to be completed this summer. Salute!

We are so grateful to our Big Top family for continuing to take care of this organization we all love so much. Heartfelt thanks to everyone who supports Big Top through your ticket purchases, your donations, your volunteer hours, and your well wishes. Until we're back together under the Big Blue Tent, we hope to see you at The Backstage, over a live-stream or on the radio. Ballyhoo!

Yours sincerely,



Kim Ogle President
Iron River, WI
Essentia Health,
Physician



Terry Matier
Executive Director
Lake Superior
Big Top Chautauqua



FINANCIAL STATEMENT

Pre-Audit Figures

2022 OPERATING REVENUES

Ticket Sales & Processing Fees	\$1,578,291
Total Contributions	\$550,833
<i>Sponsorships (Shows, Tent Show Radio, Tiny Tent Show, BART)</i>	\$273,989
<i>Operating Donations</i>	\$196,187
<i>Operating Grants</i>	\$48,127
<i>Events & Raffle</i>	\$32,530
Big Top Shop	\$105,527
Advertising, Interest, Misc.	\$33,080
Out of Tent Events (Touring, Backstage)	\$33,066
Total Operating Revenues	\$2,300,798

2022 OPERATING EXPENSES

Total Program Expenses	\$1,627,171
<i>Big Top Summer Series</i>	\$1,537,584
<i>Out of Tent Events (Touring, Backstage)</i>	\$45,130
<i>Tent Show Radio</i>	\$44,457
Office & Organizational	\$152,863
Publicity & Marketing	\$141,027
Development	\$105,456
Tent & Grounds	\$103,482
Big Top Shop/Merchandise	\$94,577
Management/Administration	\$66,738
Misc. Expenses (Bart Bus, Ferries, Other)	\$22,577
Total Operating Expenses	\$2,314,069
Net Operating Profit/(Loss)*	(\$13,271)*

RESTRICTED REVENUES AND OTHER EXPENSES

COVID Relief Grants	\$200,000
Keepers Donation Net	\$187,161
Capital Donations & Interest	\$171,675
Facilities Fees & Interest	\$82,320
New Works Initiative Donations	\$10,010
Misc. Expenses	(\$12,522)
COVID Expenses	(\$17,814)
Depreciation	(\$75,943)
Equipment	(\$84,127)
Property Improvements & Capital Expenses**	(\$186,817)
Total Restricted Revenues and Other Expenses	(\$273,943)

*Shuttered Venue Operators Grants through the Small Business Administration were given in 2021 to assist with deficits incurred March 2020 through June of 2022. That revenue is not reflected above.

**Revenues associated with Property Improvements were given in past years and are not reflected here.

Gold
Transparency
2022

Candid.



2022 SEASON HIGHLIGHTS

Underwritten by The Bayfield Inn

Our 2022 summer season included:



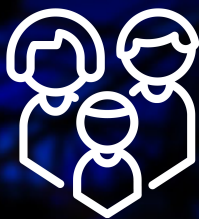
65 events



>16 weeks



11 New Artists



7 Free Family
Matinees



3 Days of
Bluegrass Camp



2 Big Top
Idol Winners



3 Free Shows
For Schools



14 Native
Community
Connection
Events



25 Original
BCO Shows

TOP SELLING GUEST ARTISTS:

1. Brandi Carlile
2. Michael Franti and Spearhead
3. Lake Street Dive

TOP SELLING ORIGINAL SHOWS:

1. Big Top Idol
2. Forever Young: A Neil Young Retrospective
3. Back to the Garden: The Music of Woodstock



BIG TOP'S BLUE CANVAS ORCHESTRA

The Heartbeat of the Big Blue Tent

Big Top's incredible house band, the Blue Canvas Orchestra, debuted three new shows during the summer of 2022, taught at Bluegrass Camp for Kids, were judges at Big Top Idol, performed 25 shows at the tent and three days at Bayfield's Apple Festival. They were back after the end of the season to wish us all Happy Holidays with their sold-out shows "Home for the Holidays with the Blue Canvas Orchestra" - the first shows performed in Big Top's new event center, called "The Backstage". Now, we can hear them all year round!

2022 BCO Original Debuts:

Pickin' on Rock

-Ed Willett and Molly Otis

In Spite of Ourselves: The Music of John Prine and Nancy Griffith

-Ed Willett and Molly Otis

Forever Young - A Neil Young Retrospective

-Severin Behnen and Corey Carlson

The Blue Canvas Orchestra is:

Severin Behnen

Musical Director

Ed Willett

Musical Director

Betty Ferris

Visuals Director

Phillip Anich

Nate Bean

Yazmin Bowers

Corey Carlson

Michael Charette

Gerry DePerry

Danielle Diamond

Tom Draughon

Jack Gunderson

Scott Kirby

Billy Knoblauch

Jan Lee

Stevie Matier

Otis McLennon

Tom Mitchell

Warren Nelson

Rowan Nelson-Ferris

Harrison Olk

Vince Osborne

Molly Otis

Randy Sabien

Joe Savage

Nori Schwenzfeier

Kevin Soulier

Mary Lou Williams

Liz Woodworth

Randy Wydra

"We went to the Forever Young concert in early September. I've been to hundreds and hundreds of concerts over my 62 years. This was the best of all time. The musicians were so great. I don't think Neil himself would have been as good. I've seen him 4 times..."

-L.K



ESSENTIA HEALTH FREE FAMILY MATINEE SERIES

We bring the world to our stage every summer in a series of events designed for families, free, and open to the public. The 2022 series was our biggest ever, featuring seven events, including some Big Top favorites and a performance in Ashland's Memorial Park bandshell.

2022 Free Family Matinees:

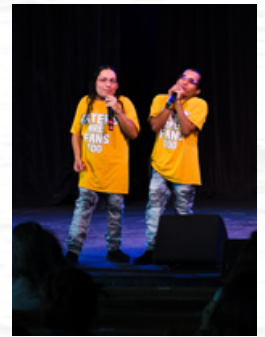
Anishinaabe Dibaajimowin: An Ojibwe Story
Okee Dokee Brothers
The Little Mermen
Michael Franti Acoustic Trio
The Bayfield Flood of '42 - Film Presentation
Artrageous
Lil' Mike & Funny Bone (2 events)

Presenting Sponsor:



Essentia Health

Additional series sponsors starting on page 14.



MEMORIAL MEDICAL CENTER BLUEGRASS CAMP FOR KIDS

Our 3-day long camp for kids is led by dedicated members of the Blue Canvas Orchestra and other Big Top team members who want to give kids an opportunity to experience learning about music and songwriting by some of the most talented people in the region. We thank them for another successful camp.

Thank you to our lead instructor- Andy Noyes, our instructors Stevie Matier, Joel Glickman, Chris Hulmer, Sean VanZeeland, Max Winkels, Karl Wallin, Andrea Christopherson and our camp coordinators Gina Nagro, Ron Nemec, Kristen Walczak and Tracey Cook.

Sponsored by:



**Memorial
Medical Center**

Right here in the place we love.



TENT SHOW RADIO

Happy 30th Anniversary Tent Show Radio! Since 1994, we have digitally remastered the best recordings of live events from our stage into a 1-hour radio broadcast, "Tent Show Radio". Hosted by New York Times best-selling author and humorist Michael Perry, we distribute TSR for free to Wisconsin Public Radio, other community-supported radio stations, online at bigtop.org/tentshowradio, and via several podcast platforms.



Tent Show Radio Team:

Matthew Jugenheimer
Producer & Engineer

Michael Perry
Tent Show Radio Host

Phillip Anich
Tent Show Radio Announcer

50,468 DOWNLOADS IN 2022

Most Downloaded Shows:

- | | |
|---|------|
| 1. Chris Kroeze | 1293 |
| 2. Them Coulee Boys | 1250 |
| 3. Anishinaabe Dibaajimowin:
An Ojibwe Story | 1221 |
| 4. Glenn Miller Orchestra | 1210 |
| 5. Charlie Berens & Adam Greuel | 1204 |

Downloads by country:

1. United States
2. Canada
3. United Kingdom
4. Germany
5. Australia

Available On:



96 COUNTRIES TOTAL

Sponsored by:

Find yourself next to the water.



NATIVE AMERICAN COMMUNITY CONNECTIONS

We honor northern Wisconsin's rich cultural heritage in a series of events at the tent that include guest artists and Native American artists and performers from our local region. Events also include the Native American "Blessing of the Tent" by elders of the Red Cliff tribe during New First Night, and "Wigwam Talks" - held in a longhouse built on our campus each year by a local artist. Join us in the wigwam for drummers, storytellers, flute playing, or a number of other presentations by members of our region's Anishinaabe communities.

All events at our tent began with a Land Acknowledgement, written by Katrina Werchouski and Michael Charette:

Lake Superior Big Top Chautauqua acknowledges and honors the Anishinaabe, the traditional caretakers of this land on which we are all gathered today. For the Ojibwe people past and present, and for you and all our relations, we acknowledge our responsibility to care for this land and to work together for the good of future generations. We remember, we honor, and we promise.

Sponsored by: Wisconsin Public Radio



FREE SHOWS FOR SCHOOLS

Every fall right after the school year starts, we invite our region's schools to join us at the tent for a free event. These events help to supplement schools districts' art education budgets, teach kids "live event etiquette" and help get kids engaged in the arts by exposing them to high-quality live performances.

For 2022, we offered schools three opportunities to attend, as well as a live stream option! We broke our record for attendance for this event, including students who watched the live event from their own school. Thank you to the Chequamegon Bay Arts Council and the Anishinaabe Fund of the Duluth Superior Area Community Foundation for supporting this important program, and the Chequamegon Bay Area Community Fund of the Duluth Superior Area Community Foundation for funding transportation for some of our community's students.





BIG TAP CHAUTAUQUAFEST

In Honor of Kevin Hunt

After a two-year hiatus, our annual Big Top/Mt. Ashwabay fundraiser Big TAP ChautauquaFest was back! It was a beautiful fall day, with live music and comedy, beer (and lots of other beverages), food samples, door prizes, and *that game where you compete to see who can drive their nail into the stump fastest.*

Thank you to everyone who helped to make this event such a great success!

Sponsored by: Amie Hunt & Justin Kegel

Additional sponsors starting on page 14.

BIG TOP IDOL

Our regional singing competition enjoyed its 12th season in 2022. We thank everyone who took part in this year's event. Top honors went to Big Top Idol **Brent Ekstrom** and Junior Idol **Paityn Connor**.

Thank you to Big Top Idol coordinator Gina Nagro, our coaches and judges - Jan Lee, Kevin Soulier, Danielle Diamond, Stevie Matier, Claire Duquette and our host John Munson.

Sponsored by: **BREMER BANK**



BEHIND THE MAGIC

BTC Administration

Terry Matier
Executive Director

Will Cushing
General Manager

Laura Greene
Development Manager

Anney Olson
Volunteer Coordinator &
Development Assistant

Seth Meierotto
Marketing Director

Gina Nagro
Digital Marketing Specialist and
Programming Assistant

Tracey Cook
Production and Stage Manager

Nick Hays
Facilities Manager

Matt Jugenheimer
Technical Director &
Tent Show Radio Producer

Drew Kennebeck
Livestream Engineer, Marketing
& Production Assistant

Elizabeth Murphy
Box Office Manager

Box Office and Gate Attendants

Ayla Berman
Riley Buley
Samantha Buley
Brooklyn Elza
Vincent Jablonski
Melissa Lund
Jennifer Rose

Tech Crew

Vincent Jablonski
Paul Karpinski
Drew Kennebeck
Trisha Miller
Jonathan Small
Sabrina Wertman

House Managers

Melissa Berman
Bob Boesch
Chris Hulmer
Marie McFarlane

Summer Show Staff

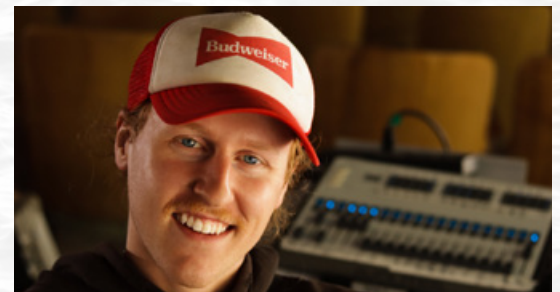
Kirk Bratrud
Chef & Artist Services

Travis Brown
Facilities Assistant

Mary Hassett-Gabrys
Artist Assistant

Audio Engineering

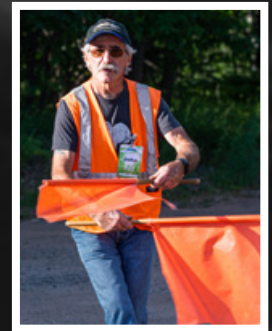
T&E Concert Services
Travis Johnson
Keenan McIntyre-Talbott
Matt Jugenheimer



OUR VOLUNTEERS

For 37 years, Big Top Chautauqua has relied on our community's volunteers for everything from taking tickets at the front gate to cleaning up after the shows. Our 175 volunteers in 2022 donated 1,175 of their evenings and afternoons for 65 events over the course of 16 weeks. They are, without a doubt, some of the hardest-working volunteers in the state, and we are grateful to have such incredible community support.

**BIG TOP CHAUTAUQUA
WOULDN'T EXIST IF
NOT FOR
175
VOLUNTEERS**



**THIS YEAR'S VOLUNTEERS
DONATED AN ESTIMATED
4,700
HOURS OF WORK**

Deborah Aaron
Robert Aaron
Siri Anderson
Dave Anderson
Amaris Andrews-DePerry
Sheila Applen
David Askue
Stephen Ballou
Jennifer Banowetz
Jeff Banowetz
Stella Banowetz
Kellen Banowetz
Amy Barker
Lily Barker
Mark Barker
Terry Bauer
Michael Berg
Amy Billman
Kristy Bobb
Pamela Boesch
Denise Bosak
Elizabeth Brennan
Donna Britten-Christman
Carl Broberg
Carolyn Brooks
Lisa Brown
Jim Burg
Gretchen Burke
Brad Burton
Sheree Bye
James Cape
Leah Cardoni
Roger Cardoni
Darlene Charboneau
Richard Charboneau
Anne Chartier
Kristen Christensen
Kimberly Christensen

Diane Christopherson
Dennis Clark
Michael Cyr
Beverly Cyr-Volpone
Richard Desjardins
Charlie Doran
Danny Dulitz
Carlyn Dulitz
Mark Ehlers
Kyle Ellefson
Kathryn Erickson
Chris Erkmann
Carl Falkenberg
Judy Falkenberg
Meg Farrington
Maureen Felt
Larry Fickbohm
Chuck Finn
Kay Flynn
Gregory Gabrys
Erin Geraghty
John Gerzina
Gayle Gonsior
Michelle Gordon
Frank Gordon
Barb Gordon
Pauline Grooms
Carrie Grove
Susan Hall
David Hall
Sally Hanchett
Mary Hanchett
Carol Hanchett-Card
Jane Hauser
Mitch Haycock
Karen Heisick
Reino Hill
Virginia Hirsch

Shelly Holland
Monika Hoyt
Patrick Jerich
Brenda Jerich
Donna Jones-Ilsey
Brenda Kaese
Paul Kaese
Rebecca Keith
Susan Kelly
Kristi Kiel
Jeanette Kindred
Jerelyn Koosmann
Donna Kramolis
Gary Krueger II
Keith Kylmala
Julie Le Blanc
Bradley Lemire
Elizabeth Lexau
Carol Lindsey
Doug Lowthian
Linda Mackley
Erica Macrum
Willow Macrum
Neill Macrum
Christine Markley
Kristen Mathisen
Stevie Matier
Mary Beth Matthias
Tegan McFarlane
Craig Mealman
Ian Meeker
Michaleen Melby
Audrey (Frisk) Miller
Jim Miller
Bret Miller
Marsha Mueller
Sara Nelson
Patricia Nelson

Ron Nemec
Linda Nemec
Lorraine Norrgard
Phil Norrgard
Paul Norris
Kim Ogle
John Olson
Patricia (Pat) Olson
Jeff Opperman
Linda Opperman
Dominic Papatola
Thomas Peacock
Elizabeth (Betsy) Peacock
Jennifer Peacock
Jim Pedersen
Ginny Pedersen
Kellie Pederson
Mark Perrine
Megan Perrine
Jim Perry
Sue Radtke
Sally Randell
Chris Reiss
Judy Reiss
Sara Richter
Constance Ross
Trevor Rowley
Greg Rozier
Robin Rueckert
Diane Rupnow
JoAnn Rush
Linda Saetre
Beverly Sandgren
Henry Schaver
Erin Schlager
Emily Schlager
William Schlager
Craig Shanks

Emmer Shields
Patricia Shields
Dee Ann Sibley
Patrick Skelly
Ray Standke
Vicki Staudte
Carly Stephenson
Parker Sterling
Keri Stifter
Kevin Stifter
Mary Stodola Rapacz
David Stoiber
Nan Swift
Adeline Swiston
Sherrri Swiston
Dean Talbott
Michele Tegen
John Thiel
Jim Thole
Lucy Tyrrell
Kate Ullman
Stuart Utley
Bill Van Sant
Julie Van Stappen
Gary Voegele
Nancy Walsh
Doug Warren
Margaret Watkins
Harold Watkins
Katrina Werchouski
Carrie Werringham
Joy Wooley
Steven Yoshikane
Pamela Zbesko
John Zbesko

GRANT SUPPORT

Free Shows for Schools were funded in part by a grant from the **Chequamegon Bay Arts Council** with funds from the **Wisconsin Arts Board**.

Complimentary tickets for the Red Cliff Band of Lake Superior Chippewa were provided by the **Red Cliff / Miskwabiikaang Fund of the Duluth Superior Area Community Foundation**.

The Free Shows for Schools were funded in part by a grant from the **Chequamegon Bay Area Community Fund of the Duluth Superior Area Community Foundation**.

Multiple performances by Lil' Mike and Funny Bone and funding for the purchase of Assistive Listening Devices were supported by the **Arts Midwest GIG Fund**, a program of Arts Midwest that is funded by the **National Endowment for the Arts**, with additional contributions from the **Wisconsin Arts Board**.

The presentation of "Anishinaabe Dibaajimowin: An Ojibwe Story" was funded in part by a grant from the **Anishinaabe Fund of the Duluth Superior Area Community Foundation**.

Our Mission-based programming was supported by the **Xcel Energy Foundation**.

Livestream production was funded in part by a **Wisconsin Humanities Recovery Grant**. Wisconsin Humanities Recovery Grants help our state prevent, prepare for, respond to, and recover from the pandemic. Funding for these grants is provided by the **National Endowment for the Humanities and the American Rescue Plan Act of 2021**.

The purchase of Assistive Listening Devices was also supported by the **Apostle Islands Human Rights Fund of the Duluth Superior Area Community Foundation**.

General Operating support provided by the **MAHADH Fund of the HRK Foundation** and the **Mary H. Rice Foundation**.

Transportation of the Ashland School District students to the Free Show for Schools: "Anishinaabe Dibaajimowin: An Ojibwe Story" was provided by the **Chequamegon Bay Community Fund of the Duluth Superior Area Community Foundation**.

General operating support was provided by a grant from the **Wisconsin Arts Board** with funds from the **State of Wisconsin and the National Endowment for the Arts**.

Our cultural exchange project was supported in part by a grant awarded from the **Western Arts Alliance Advancing Indigenous Performance Touring Fund** and the **Andrew W. Mellon Foundation**.

The Essentia Health Free Family Series is made possible by the generous support of **Essentia Health**.



KEY PARTNERS



We are so grateful for our ten years of partnership with **The Bayfield Inn** that has been vital to Big Top's long-term success. We thank you for underwriting our 2022 summer season of events. The Bayfield Inn has been serving visitors in Bayfield for close to 100 years. For all the details, see bayfieldinn.com



Did you know **Ashwabay Outdoor Educational Foundation** provides the food and beverage services for all events at our tent? All proceeds benefit AOEF, whose mission is to create opportunities for citizens to participate in and contribute to the outdoor culture of the region. Learn more about this non-profit organization at mtashwabay.org



We partnered with several local businesses to provide free accessible shuttle service throughout Ashland and Washburn. Bayfield shuttle service was provided for every event at our tent by **Seagull Bay Motel**. See *additional sponsors starting on page 14*. bigtop.org/shuttle, or bartbus.com



Heritage Society members have pledged lasting support to Big Top Chautauqua through their estate gift, insurance policy, or IRA qualified charitable distribution. Members help ensure that Big Top has the ability to provide cultural activities, celebrate history and strengthen our community for generations to come.

Bob Durfey & Ann Barthelemy
 Bob Breunig
 Gerald & Susan DePerry
 Cheri Eddy
 Jeanne Engle
 Mark Frankart
 Ruth Goetz
 Keith Kylmala
 Jeff & Debra Lewis
 Ron & Kay Maassen
 Stephen & Terry Matier
 John McFaul
 Derek & Kim Ogle
 Jim & Joy Perry
 Lee Ann Richards
 Kimberly Rymer
 Carolyn Sneed
 Therene & Douglas Stearly
 Karen Traut

In Memoriam:

Elaine Frankart
 Larry Gansluckner
 JoAnn Greb
 Tim & Kitty Hartnett
 Kevin Hunt
 Gordon and Linda Johnson
 Mary Hulings Rice
 Jerry Richards
 Robert Sneed

If you'd like more information about including Big Top Chautauqua in your estate planning, please reach out to **Executive Director Terry Matier at 715-373-0687**



The Keepers are a group of fun-loving individuals who value the presence of music, arts, and culture in the Northwoods. Together they have provided nearly one-million dollars for the long-term stability of Big Top Chautauqua. The KEEPERS will help ensure that the Big Top remains a beacon of inspiration for this generation and the next.

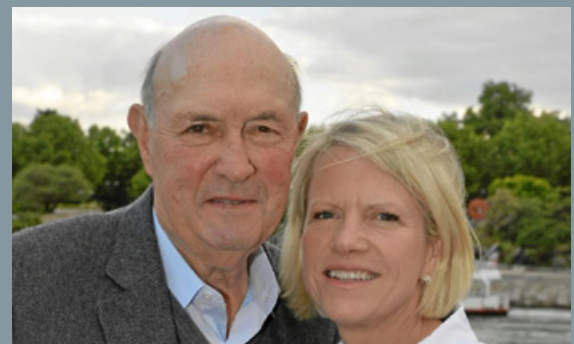
Thank you for helping to tend the light that is Big Top Chautauqua!



IN LOVING MEMORY

Don Funk, Founder of the Keepers

In June we lost a true giant with Don Funk's passing. Don was a visionary, smitten by Big Top Chautauqua, immersed in music, and in love with the Northwoods. Don and Abby saw the need for long-term support and a small army of like-minded people to carry us beyond the three decades of music and magic of the blue and gray tent. In 2015, Don was instrumental in the creation of this group of stewards for Big Top. To memorialize our dear friend, the man who put the Fun in Fundraising, we are pleased to officially name the white party tent The Funseeker Tent in Honor of Don Funk.



BIG TOP SUPPORTERS

Big Top is blessed to have a dedicated group of supporters who make all of our programs possible. A heartfelt **THANK YOU** to all of our donors and sponsors. The magic of Big Top could never happen without you!

\$10,000 +

The Bayfield Inn ♪ ♯
Blue Wave Foundation,
Jim & Beth Hagstrom ↓
Cheryl Fosdick,
CF Design Ltd. ↓
Abby & Don Funk ↓
Ron Harrold
Motion to Go ↓ ↓
Gordon & Linda Johnson †
Keith Kylmala
Kylmala Truss ↓ ↓ †
MAHADH Fund of HRK
Foundation in Memory of
Betty & Bill Hulings
Mary H. Rice Foundation in
Honor and Celebration of
the Life of Mary H. Rice ★
Kim & Derek Ogle ↓ ↓ ♯
John & Lori Overbeck ↓ ↓
Christopher &
Bethany Owen ↓ ↓
Jim & Joy Perry ↓ ↓

\$5,000 - \$9,999

Terry & Heidi Anderson ↓
Bayfield Chamber &
Visitor Bureau ♯
Ann & Scott Bochler in
Memory of
Tad & Barbara Bretting
Mark & Kate Bugher ↓
Cable Area Chamber of
Commerce ♯
Essentia Health ♯
Aaron Guski Construction,
LLC ↓
Thomas Harper ↓ †
Larry Hendrickson &
Barbara Forster ↓
Patrick & Mary Lou Irvine ↓ ↓
Terri Johnson & Roy
Froemming Family Gifting ★
Penny Marx in Memory of
David & Wyona Marx ↓ ↓
Pete & Colleen McIntyre ↓ ↓
Donald Pentz
Seagull Bay Motel ♯
John & Pamela Smylie ↓
Xcel Energy Foundation ↓

\$2,500 - \$4,999

Ashland Area Chamber of
Commerce ♯ ♯
Ashland Baking Company &
Black Cat Coffeehouse ↓
Bayfield County Tourism ♯
BMO Harris Bank ↓
Bill Bodin,
Bodin Fisheries ↓
Cobblestone Inn ↓
Barrett & Nancy Corneille,
Hill 'n Vale Ranch ↓
Deborah Deleagan in Memory
of Dennis Deleagan ↓
Elza Heating Co ↓ ♯
Jenna Galegher, Windseeker
Realty & Rentals ↓
John & Susan Gerzina ↓
Sheldon & Peggy Goldberg ↓
Green Bay Packer
Foundation ♯
Rob & Elke Hagge ↓
Floyd & Betty Hofstetter ↓
Marilyn & Bill Hopper ↓
Denny & Judy Kurschner ↓
Memorial Medical Center ↓
Ted & Dawn Michael ↓
Midland Services, Inc. ↓
Dave Olson &
Kathy Grafsgaard ↓ ↓
Pete & Sara Richter ↓
Bob Schuning & Mary Ellen
Stewart ↓
Pat & Judy Sebranek ↓
Security State Bank ↓
Stephen & Cami Smalley ↓ ↓
Leo & Chris Stern ↓
Marilyn & Bill Van Sant ↓ ↓ ♯
Wild Rice Retreat ↓

\$1,000 - \$2,499

Mick & Connie Anderson ↓
Eric & Wendy August ↓
Barbara & Richard Barry
Shay Berkowitz ↓
Charles & Peg Bertel ↓
Steve Birenberg,
Northlakes Capital
Management ↓
Bremer Bank ↓

Brownstone Pharmacy RX &
Porter Realty ↓
CG Bretting Manufacturing
Co Inc ↓
Choice Title, LLC ♯
James & BJ Collier ↓
James & Melissa Cragoe ↓
Doug & Joan Cybela ↓
Deepwater Grille &
The Alley ↓ ♯ ♯
Charles & Loleta Didrickson
in Honor of Don Funk ↓
Bill & Mary Jo Fairbanks ↓
Judy Farling ↓
Kenneth & Sharon Farrey ♯
Brian Fehr,
Frosty's Outpost Bar & Grill ↓
Ronald & Shelley Fox
John & Jean Geisler ↓
Penny Gill ↓
Darl Gosseline &
Jeff Amraen ↓
Jim & Susan Gould ↓
Dave & Sue Harycki ↓
Jim & Cindy Holton ↓
Amie Hunt & Justin Kegel ↓
Kristen Hunt-Kappler
in Memory of Kevin Hunt
Bruce & Barbara Jensen
T.J. Jodarski &
Pamela Henry ↓
Bill Kacvinsky,
Vernon Construction, Inc. ↓
Allan Kauth
John & Lynda Kern ↓
John & Teresa Kolar ↓
Landmark Conservancy ↓
Karl & Shari Nelson ↓
Elizabeth Nickel
Northern State Bank ↓
William & Cynthia Owen ↓
Terry Panian & Pat Effertz ↓ †
Dominic Papatola &
Mary Jones
Jim & Ginny Pedersen ↓ ♯
Beverly & Fred Pinkerton ↓
Timothy Pretzsch &
Dona Miller ↓
Red Cliff Band of Lake
Superior Chippewa ↓ ♯



41.4% of our more than 7,100
ticket buyers live more than 100
miles from our tent making
Big Top Chautauqua an economic
driver for Chequamegon Bay.

Thank you to our 2022 media partners:

The Ashland Daily Press
The Duluth Reader
WDIO-TV, LLC
Wisconsin Public Radio
WOJB Radio
WXPR Public Radio

Judy & Christopher Reiss
Sjana & Kevin Schanning ↓
Roger & Sharon Schaver ↓
Angela & Nate Schoeppach ↓
The Snug ↓
Kathy & Mike Spence ↓
Mary Sweval & John Breese ↓
Monica Sword
in Memory of Lena Kay Rufus ↓
Susan & Peter Turney ↓
VHS Cleaning Services Inc.
The Washburn Inn &
Harbor View Event Center ♯
Loni & Richard Weber
Dan & Liz Wilczek ↓
Avery Woods ↓
Donna Woods &
Jon Hinrichs ↓
Elouise Woods ↓
Bernick's ↓
Best Western Hotel
Chequamegon ♯
Joan & Doug Borchardt ↓
Mike & Bonnie Brasic
Cathy & Mike Brennan
Kari Breunig
City of Washburn ♯
Richard & Peggy Daluge
Edward Jones Investments ♯
Alan & Lollie Eidsness
Hugh Epping in Memory of
Nancy J. Epping
Glenn & Celeste Forbes
Chris Frasch
Terry & Lynn Frick
Thomas J. Gallagher
& Ruth Bachman
Ruth & Bruce Goetz ♯

\$500 - \$999

AmericInn of Ashland ♯
Ashland Super 8 ♯
Ann & Douglas Barncard
Mark & Diane Bassett
James & Elinor Beck
Dan & Susan Benzie

Show Sponsor ♪
Keeper ↓
Tent Show Radio ♯
BART Sponsor ♯
New Works Initiative ★
Capital Supporter †
Free Family Sponsor ♯

Mary & Joe Grant in Memory of David & Wyona Marx
 Great Lakes Insurance Agency Inc **f**
 Ron & Jenny Gullicksrud
 Hansen's IGA-Washburn **f**
 Pamela Hargrove
 Gregg Haug
 Hauser's Superior View Farm **f**
 Kevin & Virginia Hendricks
 Adrian Hilz
 Shelly Holland, Escape Excursions-Apostle Islands Adventure Tours **f**
 Thomas & Cindy Holloway
 Pam Kaufman & Dennis Keierleber
 Michael Kinnee & Genevieve Johnson
 Jean Knox
 Thomas & Jeanne Kraker
 Eric & Laurel Lein
 Debra & Jeffrey Lewis **f**
 Terry & Stevie Matier **♣**
 Charles Meech, Madeline Island School of the Arts
 Bob & Anne Merkel
 Jim and Kathy Miller
 Patrick & Nancy O'Brien
 Will Ogle
 Neil Olson, Twin Ports Dental **f**
 Sandra & Richard Olson **♣**
 Karl Paasch
 Richard & Lorraine Pilch
 Quality Inn Ashland **♣**
 Terri Lynn Sabby
 Terry & Judy Schlinkmann
 June Sellung

Sue Sentieri
 James Shafstall, American Family Insurance Washburn **f**
 David Sneed, 211 Martini Bar **♣**
 Spears, Carlson & Coleman **f**
 Robin Sperl & Warren Kramer
 Sharon & John Stewart
 Superior Beverages LLC **♣**
 James & Anne Thomas
 James Tucker
 Von Holzen Pontiac, Buick, GMC Inc. **f**

\$250 - \$499

Jim Annis
 Roger & Majorie Asplund **♣**
 Doug Bailey
 David & Cheryl Bartlett
 Carl & Pam Bauer
 Don Baur & Phebe Jensch in Memory of Mary Rice
 Mike & Lynn Bebeau
 Rabbi Allen B. Bennett
 Lynette & Gary Benzschawel
 Lynn Berger
 Anna Biermeier & Roger Hanson
 Tom & Karen Boggess
 Paul & Margaret Boissevain
 George & Tammy Brandis
 Tim & Sue Butler
 Jean & Kirt Champion
 Rick & Darlene Charboneau
 Paul Chase
 Henry & Martha Cole
 Brian & Teresa Colianni
 John Cronkrite

Laurie & Steve Daiken
 Sue & Dave Dierksen
 Nancy Dooley
 Bob Dreps & Betty Koehl
 Meg Dudley & Mark McGinnis
 Bob Durfey & Ann Barthelemy in Honor of Phillip Anich
 George & Cheryl Elzy
 Jean & Wade Engebretson
 Thaddeus & Erin Ewald
 Denise Fautleroy
 Craig Florine
 The Foley Four
 Dean & Mary Gagnon
 Dan & Joyce Gavronski
 Jill Goodrich & Terry Dunst
 Owen & Wendy Gorman
 Carol Groenke
 Mike & Helen Grossman
 Curtis & Laura Lee Gullickson
 Mark & Shelley Hammes
 Drew & Dana Hanson
 Susan Hedman in Memory of Don and Lois Hedman
 Karen & Dale Heil
 Laura Herdrich
 Randy Herman
 Harold & Barbara Hoffman
 Matthew Hood & Sandee Seiberlich
 Alan & Christie Ingram
 Harry Janke & Louise Larson-Janke
 Glen & Carolyn Jenkins
 Jyothi Froemming
 Brian & Elizabeth Johnson in Memory of Carolynne Johnson
 Linda Jorgenson & Jack Gunderson
 Jack & Sally Kaiser
 Sarah & David Karnes

Debra Karpinski
 Kim Kaz in Memory of Diane Kavajecz
 Sam & Carolyn Kochel
 Dr. A.A. Koeller in Memory of Rudy Anich
 Herbert Kohl Philanthropies
 Steve & Annette Laabs
 Judith & David Lafond in Honor of the Blue Canvas Orchestra
 Jon Laible in Memory of Jo Ann Laible
 Dale Langer & Anne Maassen
 Gayle Larson
 Keith Laszewski & Diane Peterson
 Jean & Mark Ledman
 Gordon E Legge & Wendy Wilson Legge Fund
 Eric Lehto
 Gene Lemmenes in Honor of Mary Bondeson
 Anne & Dave Lenss
 Roger & Nancy Lindgren
 Randy Lund, Lund Engineering
 Sue & Steve Macejkovic
 Mark & Brenda Mantey
 Thomas & Lonna Manthe
 Barbara & Dick Marshall
 Donna Martin & Steve White
 Michael & Jane Mattila
 Tim & JoAnn McKeever
 James Meiers
 Bruce & Elsa Meyer
 Michael & Mary Mishou
 Jim & Christa Mraz
 Charles Nauen & P.J. Pofahl
 Linda & Ron Nemecek
 John & Evy Nerbonne
 Linda & Paul Nozal
 Al & Gail Ofstehage in Memory of Mary Rice

Kim & Derek Ogle in Memory of Kevin Hunt
 Dave & Cathy Olig
 Linda & Jeffrey Opperman
 Thomas Palet in Memory of J.E. Palet DVM
 Laura Peck
 Megan & Mark Perrine
 Tom & Ellen Potterton
 Susan Rankin
 Karen & Jack Rokser
 Kurt Scheidenhelm
 David & Lori Schipper
 Karl & Judi Schmid
 Richard & Judith Schmidt
 Ron & Roxanne Shuga
 Todd & Kathy Geske
 Joel & Sandra Smith
 Pamela Stilin in Memory of Rita Jean Stilin
 Ron & Jean Stolzenburg
 Gary & Amy Sweet
 Nathan Swisher
 Carol Syminow & Barb Keller
 Cliff & Marlys Tanner
 David Terry & Lucy Haultley Terry
 Karen Traut
 Peter Tropman & Virginia Graves
 Kathleen Tuttle
 Jean Underwood & Mark Bultmann
 Joanne Vagle in Memory of Chris Vagle
 Sharon & Bryan Vergin
 Jim & Carol Vogel
 Dwayne & Jennifer Watson in Memory of Rita Jean Stilin
 Mary & John Weber
 Debby Wenzler
 Amy Wildermuth
 Teresa Williams
 Bill & Sharon Wolfe



This list includes donors from \$250 and up from January 1st to December 31st, 2022. Please let us know if your name is missing or misrepresented. You deserve to be recognized.

74.4% of 2022's annual fund gifts were \$150 or less, proving no matter how big or small your contribution, every donation is vital for Big Top's continued success.



BIG TOP CHAUTAUQUA

BAYFIELD, WISCONSIN

Our Mission

Lake Superior Big Top Chautauqua provides entertaining and educational cultural activities with an emphasis on performances that celebrate history and the environment.

Our Impact

Arts and culture are essential for building community, supporting development, nurturing health and well-being, expressing our values, and contributing to economic opportunity. Collectively, arts and culture performances enable a better understanding of the past and envisioning of a shared, more equitable future. Studies show arts education and artistic activities boost learning, well-being, and development of social skills on the part of kids who are engaged.

Thank you to the 1,595 businesses, organizations, and individuals who recognized the value and impact the arts bring to our lives by supporting Big Top Chautauqua in 2022. This support provided approximately 30% of our annual budget, helping to keep ticket prices low and to provide free and low-cost programming so everyone can unplug and make great memories with their families and friends. To find out how you can help support these important programs, visit our website: www.bigtop.org.

